

MONTHLY MEMBERSHIP PROGRESS REPORT

District 201N4

Results as of: 5/31/2025

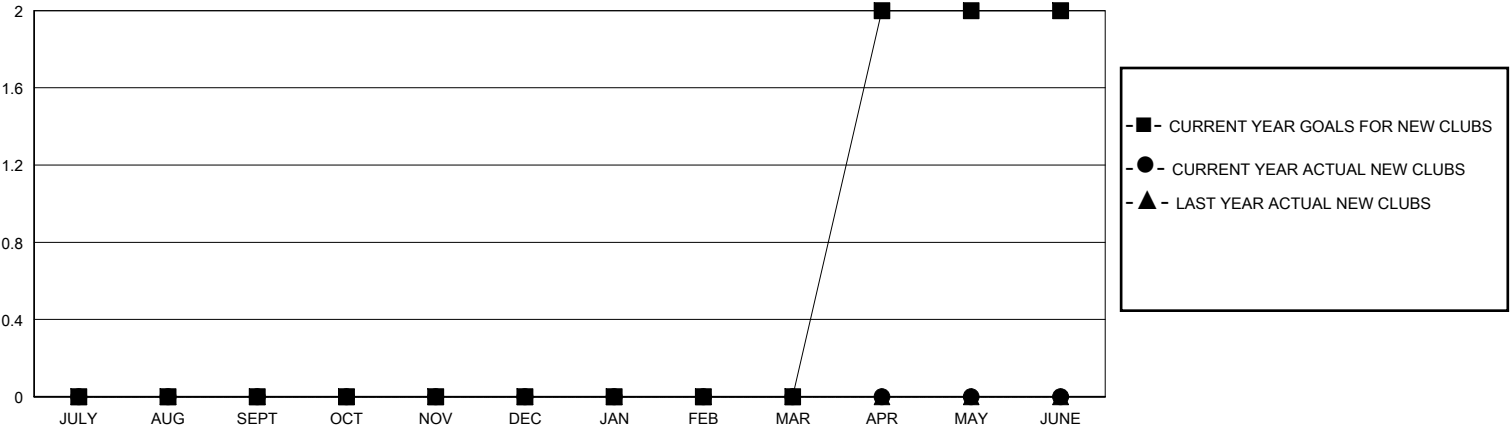
GMT:

LOCATION AUSTRALIA

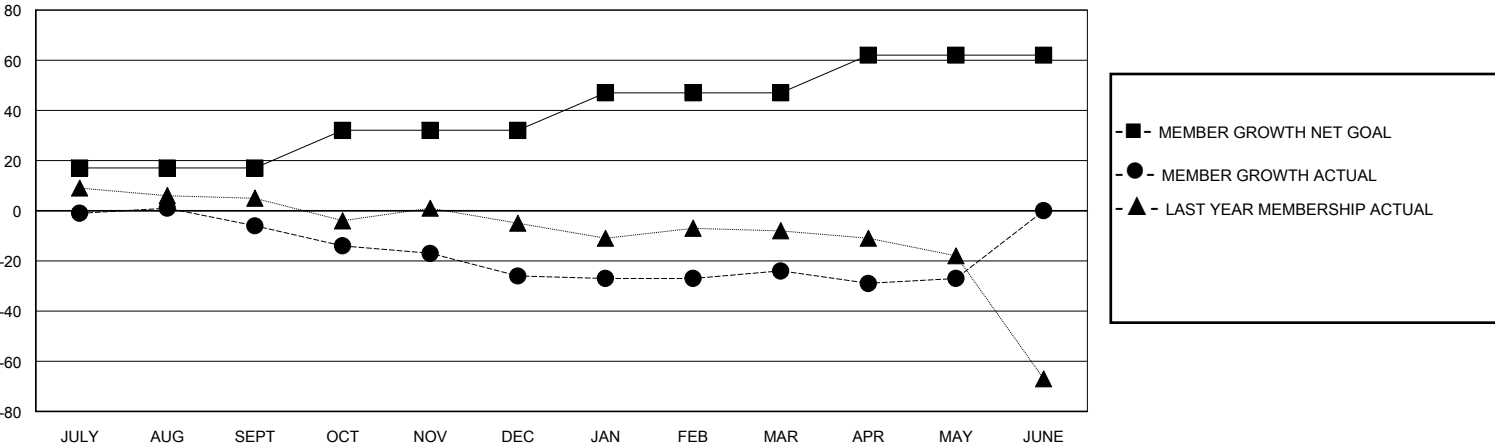
GMT CA

| Clubs | | | | Members | | | |
|-----------------------|---------------|-----------|---------------|-----------------------|------------------------|----------------------|--|
| RESULTS FOR 2024-2025 | | | | RESULTS FOR 2024-2025 | | | |
| QUARTER | NEW CLUB GOAL | NEW CLUBS | DROPPED CLUBS | QUARTER | MEMBER GROWTH NET GOAL | MEMBER GROWTH ACTUAL | DROPPED MEMBERS ACTUAL (including transfers) |
| JULY/AUG/SEPT | 0 | 0 | 2 | JULY/AUG/SEPT | 17 | 21 | 23 |
| OCT/NOV/DEC | 0 | 0 | 0 | OCT/NOV/DEC | 15 | 14 | 28 |
| JAN/FEB/MAR | 0 | 0 | 0 | JAN/FEB/MAR | 15 | 18 | 15 |
| APR/MAY/JUNE | 2 | 0 | 0 | APR/MAY/JUNE | 15 | 16 | 16 |

GOALS AND ACTUAL NEW CLUBS CUMULATIVE



GOALS AND ACTUAL MEMBERS CUMULATIVE



| | | |
|--|---|--|
| DROPPED CLUBS: 2 | 28 CLUBS OF 45 ADDED 1 OR MORE NEW MEMBERS | <u>GENDER DISTRIBUTION</u> MALE 536 (67.68%) FEMALE 256 (32.32%) |
| <u>DROPPED MEMBERS</u> DECEASED 9 CLUB CANCELLED 0 OTHER 71 TOTAL 80 | CLICK HERE FOR CUMULATIVE MEMBERSHIP DATA | TOTAL FAMILY UNIT MEMBERS 135 FAMILY MEMBERS PAYING HALF DUES 68 |